

## Exclusive Offering For Lease

# 6712 Brooklawn Parkway Syracuse, NY 13211

Located just off Thompson Road near Carrier Circle.

PEMCO Group Leasing

315.476.1273

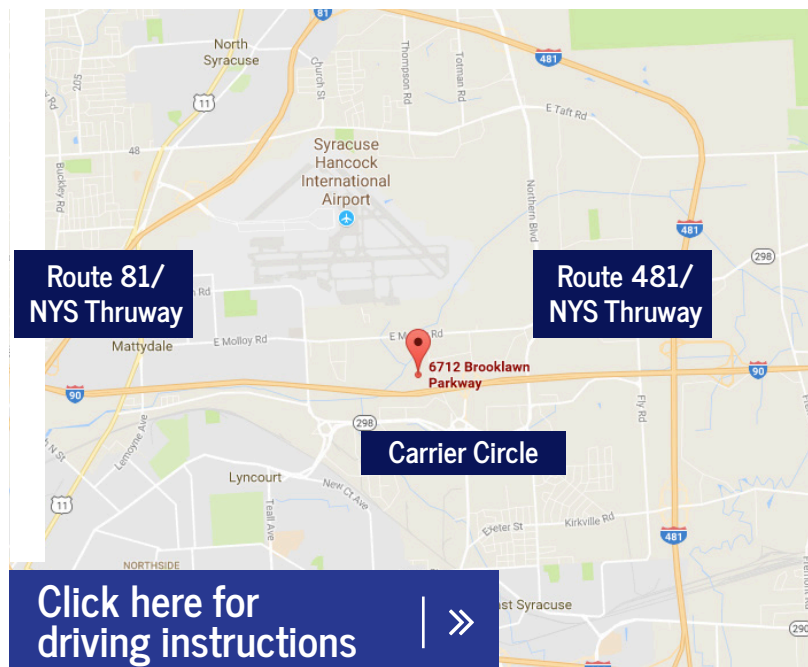
leasing@pemcogroup.com

PemcoGroup.com



### Property Details

- 3 available office spaces:  
6,309 SF | 4,991 SF
- Excellent location and good accessibility
  - 4 minute drive from NYS Thruway Exit 35
  - 5 minute drive from Carrier Circle
  - 15 minute drive from Hancock International Airport
- First class finishes, full height mahogany doors, parabolic lighting lenses, wet sprinkler system, heat pump with energy controls, and offers a great corporate image.
- \$15.50/SF/Year
- Base Year expenses include CAM, taxes, insurance, electric, cleaning and trash removal



[Click here for driving instructions](#) | >>



#### Development & Leasing:

##### Peter Muserlian, Jr.

Licensed Real Estate Sales Person  
e: pmuserlianjr@pemcogroup.com

##### Joe Catanzaro

Licensed Real Estate Associate Broker  
e: jcatanzaro@pemcogroup.com



Exclusive Offering For Lease

# 6712 Brooklawn Parkway

Syracuse, NY 13211

Located just off Thompson Road near Carrier Circle.

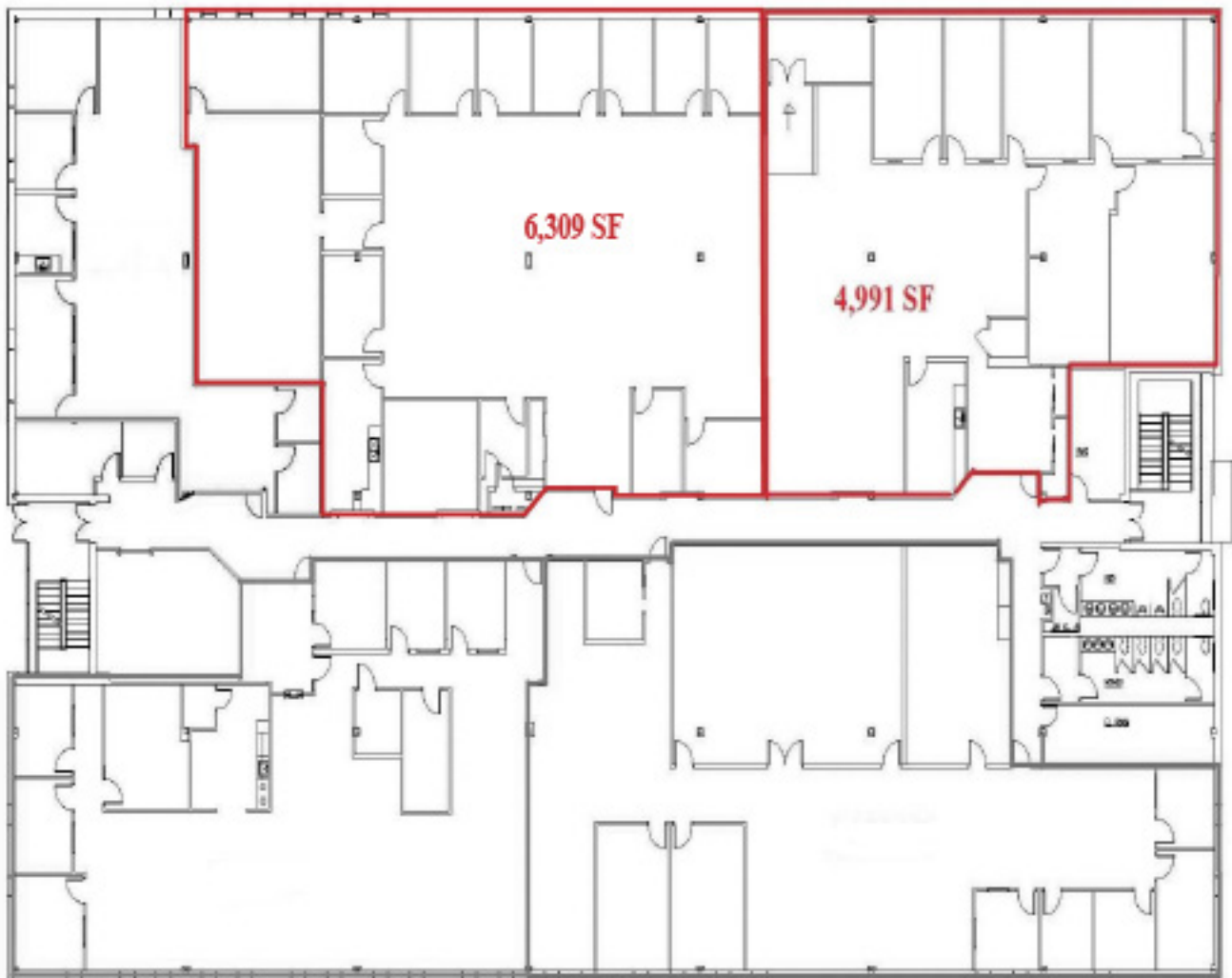
PEMCO Group Leasing

315.476.1273

leasing@pemcogroup.com

PemcoGroup.com

2 available office spaces



Development & Leasing:

**Peter Muserlian, Jr.**

Licensed Real Estate Sales Person  
e: pmuserlianjr@pemcogroup.com

**Joe Catanzaro**

Licensed Real Estate Associate Broker  
e: jcatanzaro@pemcogroup.com



All information furnished regarding this property was obtained from sources deemed reliable, but no warranty or representation is made to the accuracy thereof and the property is subject to prior sale or withdrawal.



Exclusive Offering For Lease

# 6712 Brooklawn Parkway

## Syracuse, NY 13211

Located just off Thompson Road near Carrier Circle.

PEMCO Group Leasing

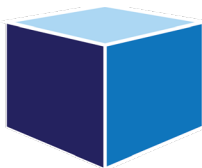
315.476.1273

leasing@pemcogroup.com

PemcoGroup.com



**PEMCO**  
GROUP, INC.



**Development & Leasing:**

**Peter Muserlian, Jr.**

Licensed Real Estate Sales Person  
e: pmuserlianjr@pemcogroup.com

**Joe Catanzaro**

Licensed Real Estate Associate Broker  
e: jcatanzaro@pemcogroup.com



All information furnished regarding this property was obtained from sources deemed reliable, but no warranty or representation is made to the accuracy thereof and the property is subject to prior sale or withdrawal.