

Exclusive Offering For Lease

Glenn Crossing Plaza

7421 Oswego Road, Liverpool, NY 13090

Shopping center in the largely populated Liverpool, NY area.

PEMCO Group Leasing

315.476.1273

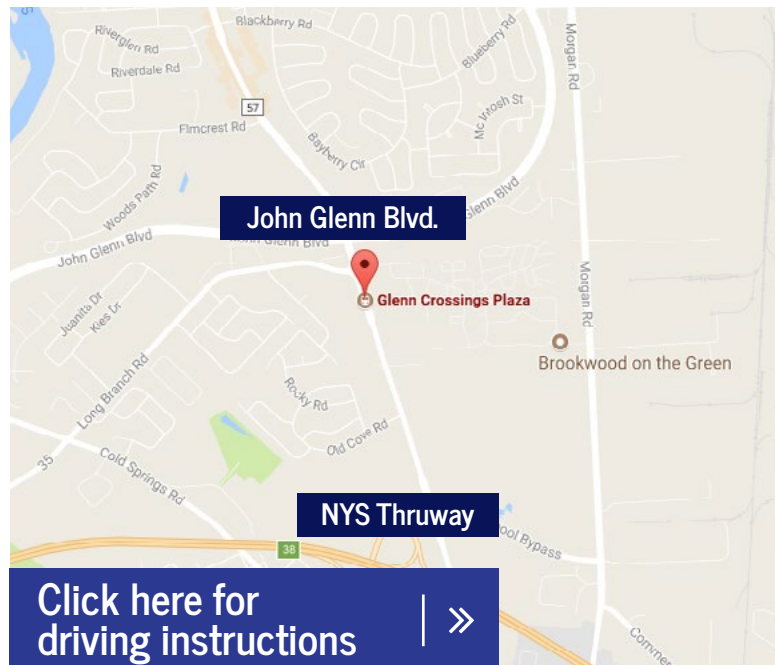
leasing@pemcogroup.com

PemcoGroup.com



Property Details

- Available space:
1,376 SF | 4,350 SF | 2,001 SF
- Anchor Tenants: Aldi's Grocery, Dollar Tree, Pascale's Liquors, Thrifty Shopper, and Excellus
- Outparcels: Solvay Bank, Pizza Hut, WellNow Urgent Care, Community Bank
- 600+ parking spaces
- Excellent location and good accessibility
1 minute drive from NYS Thruway Exit 38
6 minute drive from Route 690 North/South
1.5 miles from Amazon's New \$350 million Warehouse
1.5 miles from Amazon's New \$350 million Warehouse



Development & Leasing:

Peter Muserlian, Jr.

Licensed Real Estate Sales Person

e: pmuserlianjr@pemcogroup.com

Li: #10401245208

Glenn Crossing Plaza

7421 Oswego Road, Liverpool, NY 13090

Shopping center in the largely populated Liverpool, NY area.

PEMCO Group Leasing
315.476.1273
leasing@pemcogroup.com
PemcoGroup.com

3 available spaces



Development & Leasing:
Peter Muserlian, Jr.
Licensed Real Estate Sales Person
e: pmuserlianjr@pemcogroup.com

Lic: #10401245208

Glenn Crossing Plaza

7421 Oswego Road, Liverpool, NY 13090

Shopping center in the largely populated Liverpool, NY area.

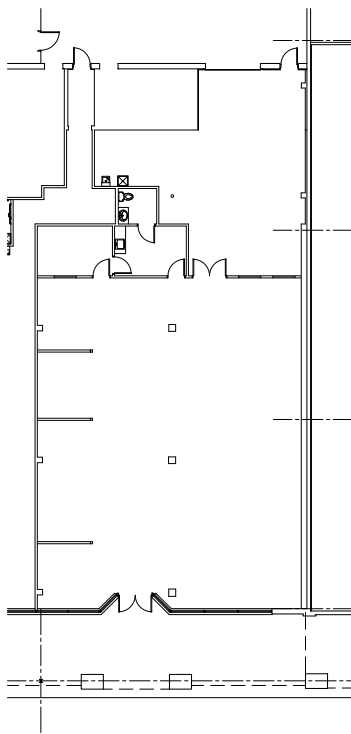
PEMCO Group Leasing

315.476.1273

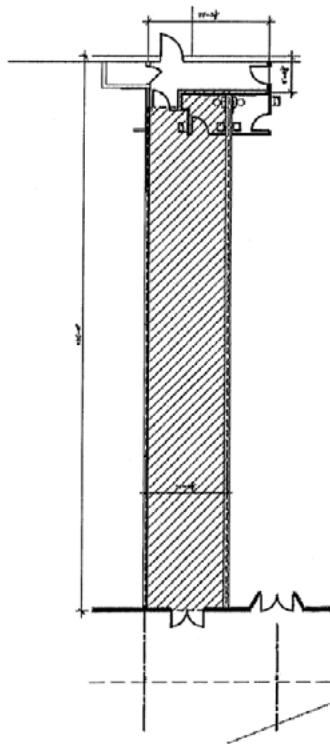
leasing@pemcogroup.com

PemcoGroup.com

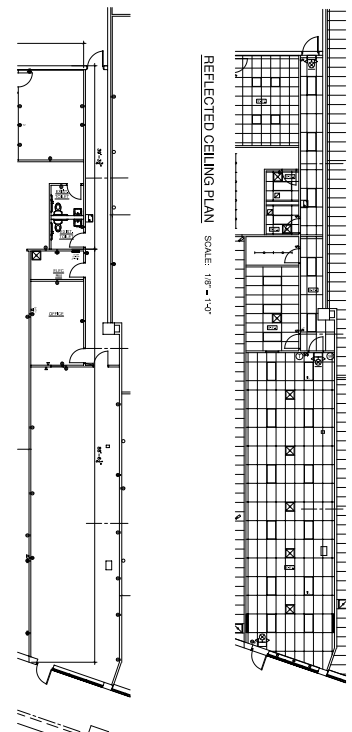
4350 sq. ft.



1376 sq. ft.



2001 sq. ft.



Development & Leasing:

Peter Muserlian, Jr.

Licensed Real Estate Sales Person

e: pmuserlianjr@pemcogroup.com

Li: #10401245208

Exclusive Offering For Lease

Glenn Crossing Plaza

7421 Oswego Road, Liverpool, NY 13090

Shopping center in the largely populated Liverpool, NY area.

PEMCO Group Leasing

315.476.1273

leasing@pemcogroup.com

PemcoGroup.com



Development & Leasing:

Peter Muserlian, Jr.

Licensed Real Estate Sales Person

e: pmuserlianjr@pemcogroup.com

Lic: #10401245208

All information furnished regarding this property was obtained from sources deemed reliable, but no warranty or representation is made to the accuracy thereof and the property is subject to prior sale or withdrawal.