

## Exclusive Offering For Lease

# 1330 East Washington Street Syracuse, NY 13210

Located conveniently from I-690 on/off ramp at Townsend Street.

PEMCO Group Leasing

315.476.1273

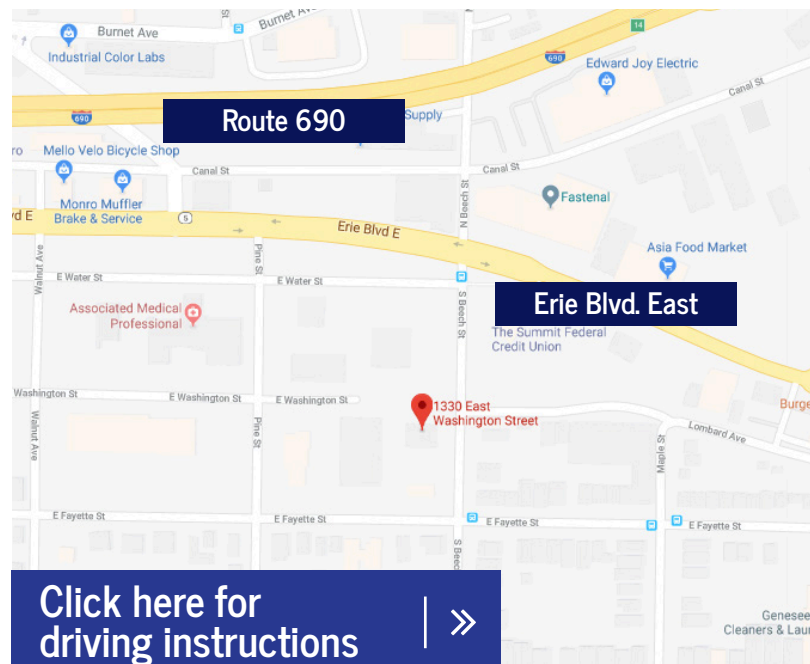
leasing@pemcogroup.com

PemcoGroup.com



## Property Details

- Available Space: 5,299 SF office/flex space
- Loading dock
- 18 foot ceilings
- Separately metered utilities
- Ample parking
- Landlord will amortize improvements into lease
- Convenient to Downtown
  - 10 minute drive from NYS Thruway exit 35
  - 9 minute drive to Destiny USA
  - 17 minute drive from Hancock Airport



[Click here for driving instructions](#) | >>



Lic. # 10401245208

### Development & Leasing:

#### Peter Muserlian, Jr.

Licensed Real Estate Sales Person  
e: pmuserlianjr@pemcogroup.com

#### Joe Catanzaro

Licensed Real Estate Associate Broker  
e: jcatanzaro@pemcogroup.com



Lic. # 30CA1165937

All information furnished regarding this property was obtained from sources deemed reliable, but no warranty or representation is made to the accuracy thereof and the property is subject to prior sale or withdrawal.

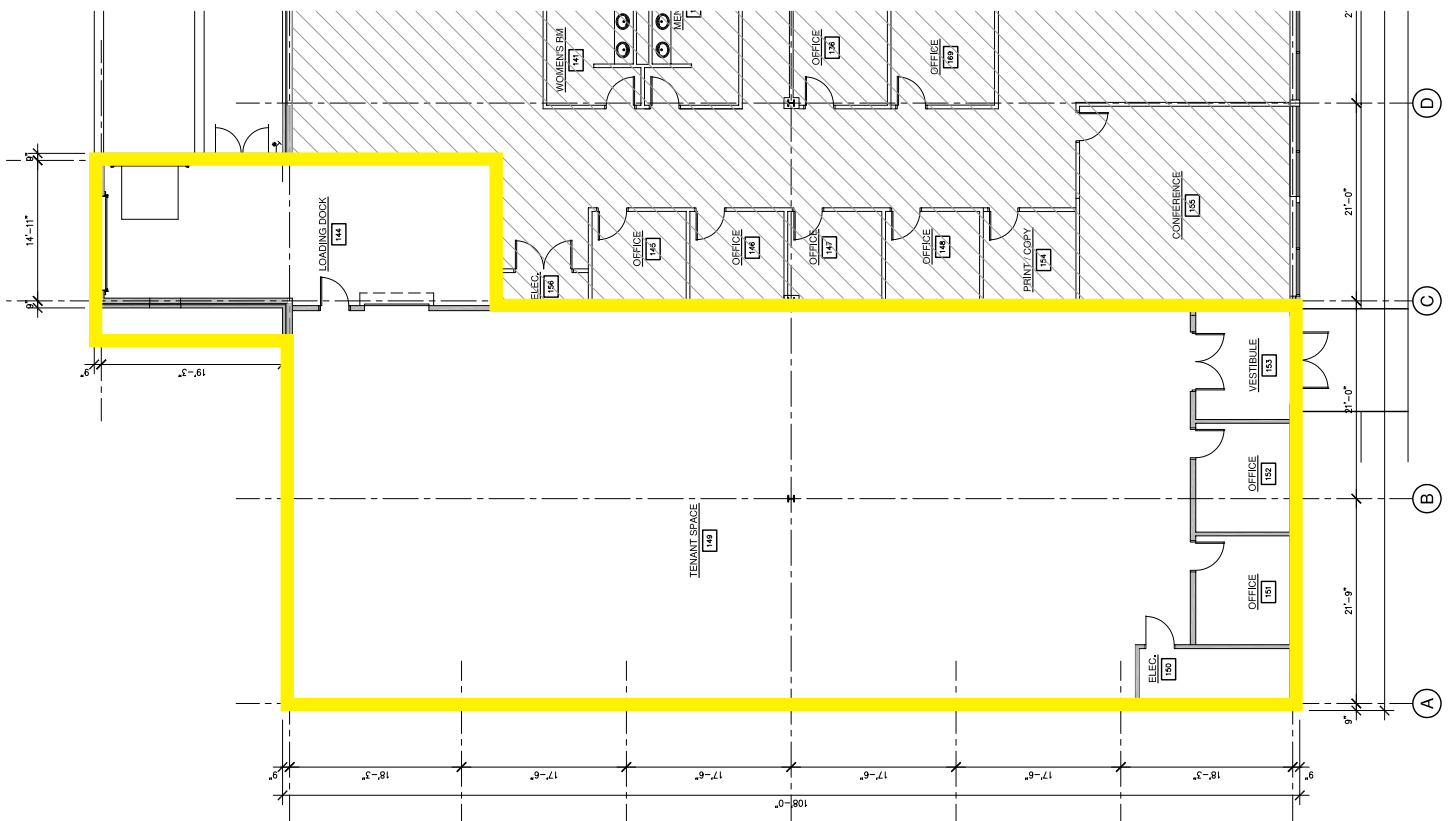
Exclusive Offering For Lease

# 1330 East Washington Street Syracuse, NY 13210

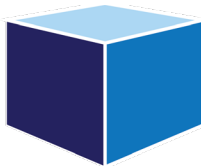
Located conveniently from I-690 on/off ramp at Townsend Street.

PEMCO Group Leasing  
315.476.1273  
leasing@pemcogroup.com  
PemcoGroup.com

5,299 SF office/flex space



**PEMCO**  
GROUP, INC.



Lic. #10401245208

Development & Leasing:

**Peter Muserlian, Jr.**

Licensed Real Estate Sales Person  
e: pmuserlianjr@pemcogroup.com

**Joe Catanzaro**

Licensed Real Estate Associate Broker  
e: jcatanzaro@pemcogroup.com



Lic. #300A1165937

All information furnished regarding this property was obtained from sources deemed reliable, but no warranty or representation is made to the accuracy thereof and the property is subject to prior sale or withdrawal.



Exclusive Offering For Lease

# 1330 East Washington Street Syracuse, NY 13210

Located conveniently from I-690 on/off ramp at Townsend Street.

PEMCO Group Leasing

315.476.1273

leasing@pemcogroup.com

PemcoGroup.com



Lic. #10401245208

## Development & Leasing:

**Peter Muserlian, Jr.**

Licensed Real Estate Sales Person  
e: pmuserlianjr@pemcogroup.com

**Joe Catanzaro**

Licensed Real Estate Associate Broker  
e: jcatanzaro@pemcogroup.com



Lic. #300A1165937

All information furnished regarding this property was obtained from sources deemed reliable, but no warranty or representation is made to the accuracy thereof and the property is subject to prior sale or withdrawal.

Exclusive Offering For Lease

# 1330 East Washington Street Syracuse, NY 13210

Located conveniently from I-690 on/off ramp at Townsend Street.

PEMCO Group Leasing  
315.476.1273  
leasing@pemcogroup.com  
PemcoGroup.com



Lic. #10401245208

#### Development & Leasing:

##### **Peter Muserlian, Jr.**

Licensed Real Estate Sales Person  
e: pmuserlianjr@pemcogroup.com

##### **Joe Catanzaro**

Licensed Real Estate Associate Broker  
e: jcatanzaro@pemcogroup.com



Lic. #300A1165937

All information furnished regarding this property was obtained from sources deemed reliable, but no warranty or representation is made to the accuracy thereof and the property is subject to prior sale or withdrawal.



Exclusive Offering For Lease

# 1330 East Washington Street Syracuse, NY 13210

Located conveniently from I-690 on/off ramp at Townsend Street.

PEMCO Group Leasing  
315.476.1273  
leasing@pemcogroup.com  
PemcoGroup.com



Lic. #10401245208

#### Development & Leasing:

##### **Peter Muserlian, Jr.**

Licensed Real Estate Sales Person  
e: pmuserlianjr@pemcogroup.com

##### **Joe Catanzaro**

Licensed Real Estate Associate Broker  
e: jcatanzaro@pemcogroup.com



Lic. #300A1165937

All information furnished regarding this property was obtained from sources deemed reliable, but no warranty or representation is made to the accuracy thereof and the property is subject to prior sale or withdrawal.