

Exclusive Offering For Lease or Sale

8687 Carling Road Liverpool, NY 13090

Immediate access to NYS RT-31, one of the area's most popular retail corridors.

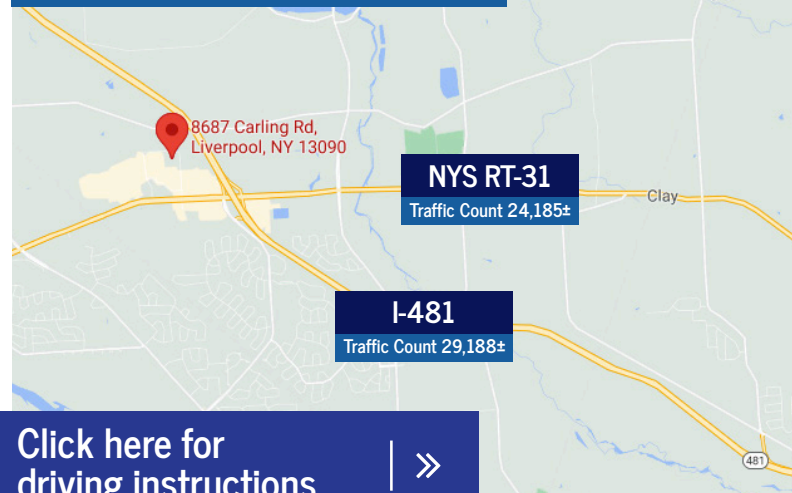
PEMCO Group Leasing
315.476.1273
leasing@pemcogroup.com
PemcoGroup.com



Property Details

- Available space: 37,850 SF on 4.31 acres
- Single-floor building
- 2.17-acre parcel with illuminated parking lot
- Excellent overall location with strong demographics and nearby amenities including:
 - national retailers
 - restaurants
 - auto dealerships
 - banks
 - hotels
 - supermarkets.
- Accessible to the large, populous suburbs of Clay and Baldwinsville, convenient to the suburb of Cicero via RT-31; also services Oswego County to the north and the city of Syracuse and its southern suburbs of Fayetteville, Dewitt and Manlius to the south via I-481.

2020 Demographics	3mi	5mi	10mi
Population	36,527	63,606	219,659
Households	10,369	25,634	90,748
Avg. HH Income	\$101,095	\$94,512	\$81,323



[Click here for driving instructions](#)



Development & Leasing:

Peter Muserlian, Jr.

Licensed Real Estate Sales Person
e: pmuserlianjr@pemcogroup.com

Joe Catanzaro

Licensed Real Estate Associate Broker
e: jcatanzaro@pemcogroup.com



All information furnished regarding this property was obtained from sources deemed reliable, but no warranty or representation is made to the accuracy thereof and the property is subject to prior sale or withdrawal.

8687 Carling Road - Liverpool, NY 13090

PEMCO Group Leasing | 315.476.1273 | leasing@pemcogroup.com | PemcoGroup.com

Exclusive
Offering For
Lease or Sale

Aerial with Surrounding Retail



Bird's Eye Aerial



Development & Leasing:

Peter Muserlian, Jr.

Licensed Real Estate Sales Person
e: pmuserlianjr@pemcogroup.com

Joe Catanzaro

Licensed Real Estate Associate Broker
e: jcatanzaro@pemcogroup.com

PEMCO
GROUP, INC.



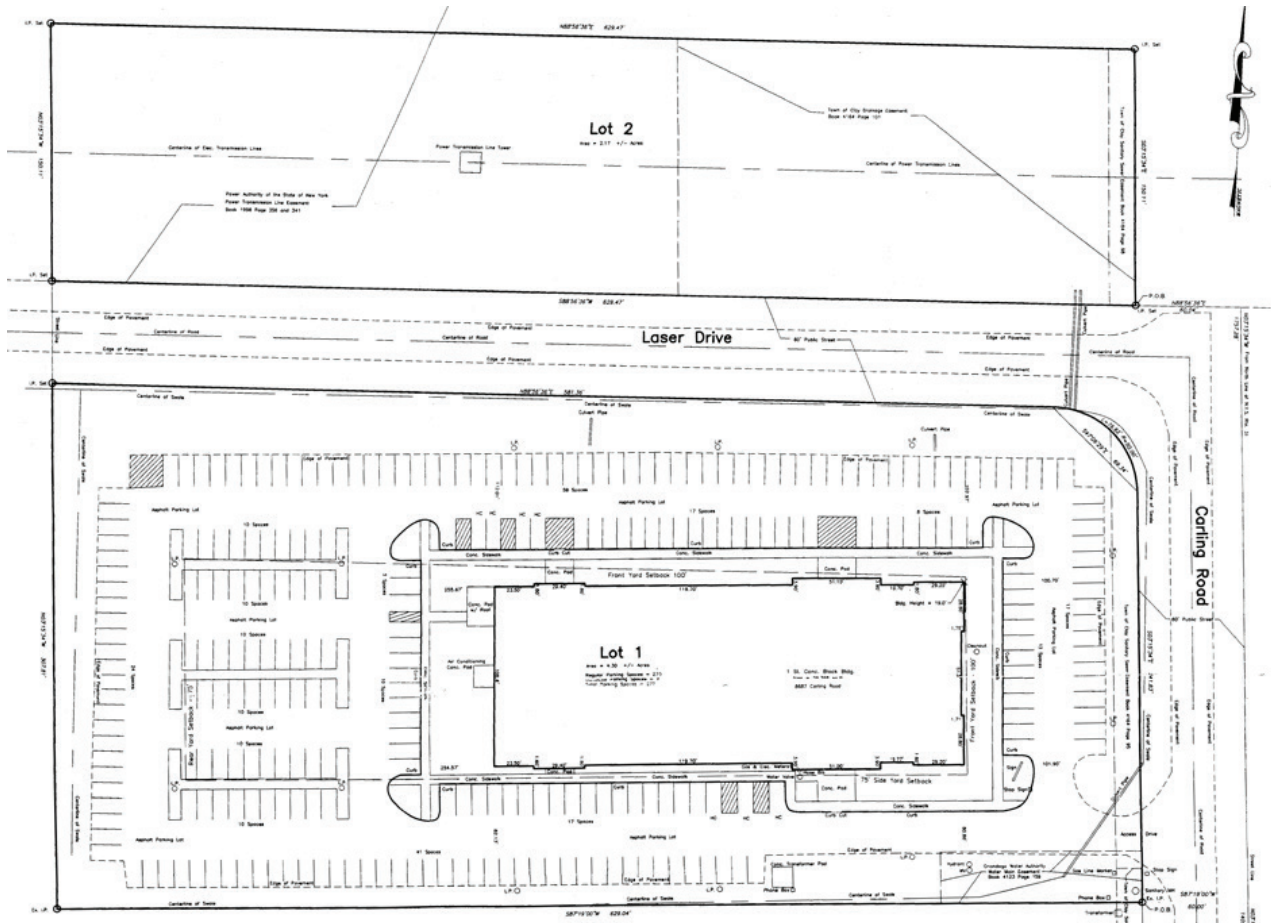
All information furnished regarding this property was obtained from sources deemed reliable, but no warranty or representation is made to the accuracy thereof and the property is subject to prior sale or withdrawal.

8687 Carling Road - Liverpool, NY 13090

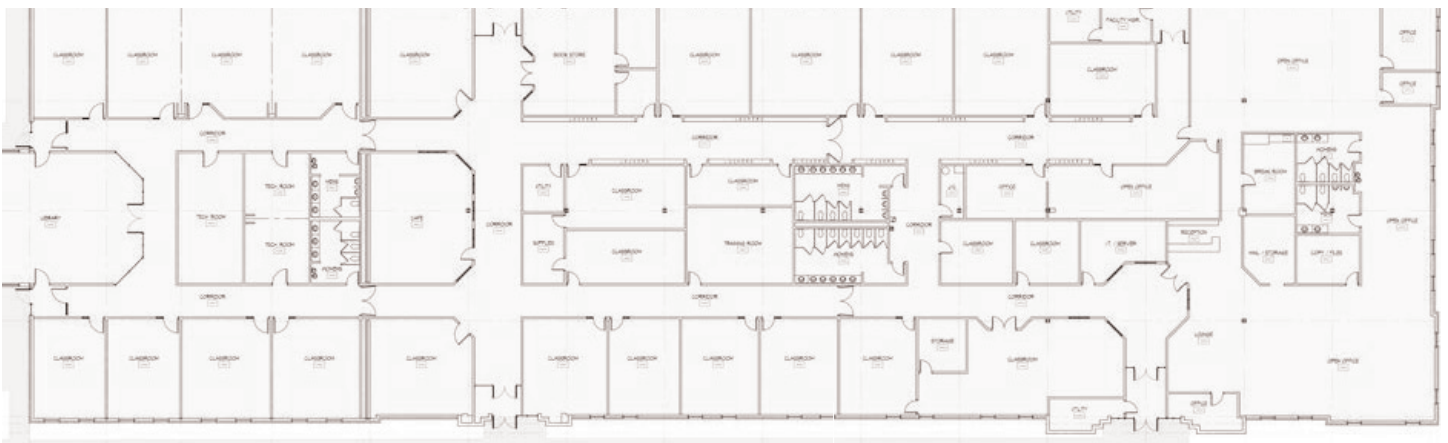
PEMCO Group Leasing | 315.476.1273 | leasing@pemcogroup.com | PemcoGroup.com

Exclusive
Offering For
Lease or Sale

Survey



Floor Plan



Development & Leasing:

Peter Muserlian, Jr.

Licensed Real Estate Sales Person
e: pmuserlianjr@pemcogroup.com

Joe Catanzaro

Licensed Real Estate Associate Broker
e: jcatanzaro@pemcogroup.com



All information furnished regarding this property was obtained from sources deemed reliable, but no warranty or representation is made to the accuracy thereof and the property is subject to prior sale or withdrawal.

8687 Carling Road - Liverpool, NY 13090

PEMCO Group Leasing | 315.476.1273 | leasing@pemcogroup.com | PemcoGroup.com

Exclusive
Offering For
Lease or Sale

Gallery



Development & Leasing:

Peter Muserlian, Jr.

Licensed Real Estate Sales Person
e: pmuserlianjr@pemcogroup.com

Joe Catanzaro

Licensed Real Estate Associate Broker
e: jcatanzaro@pemcogroup.com



All information furnished regarding this property was obtained from sources deemed reliable, but no warranty or representation is made to the accuracy thereof and the property is subject to prior sale or withdrawal.